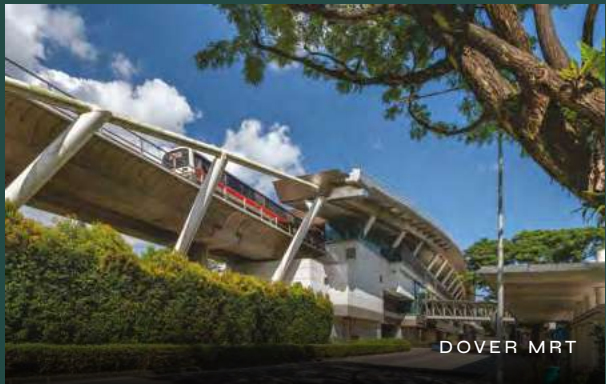
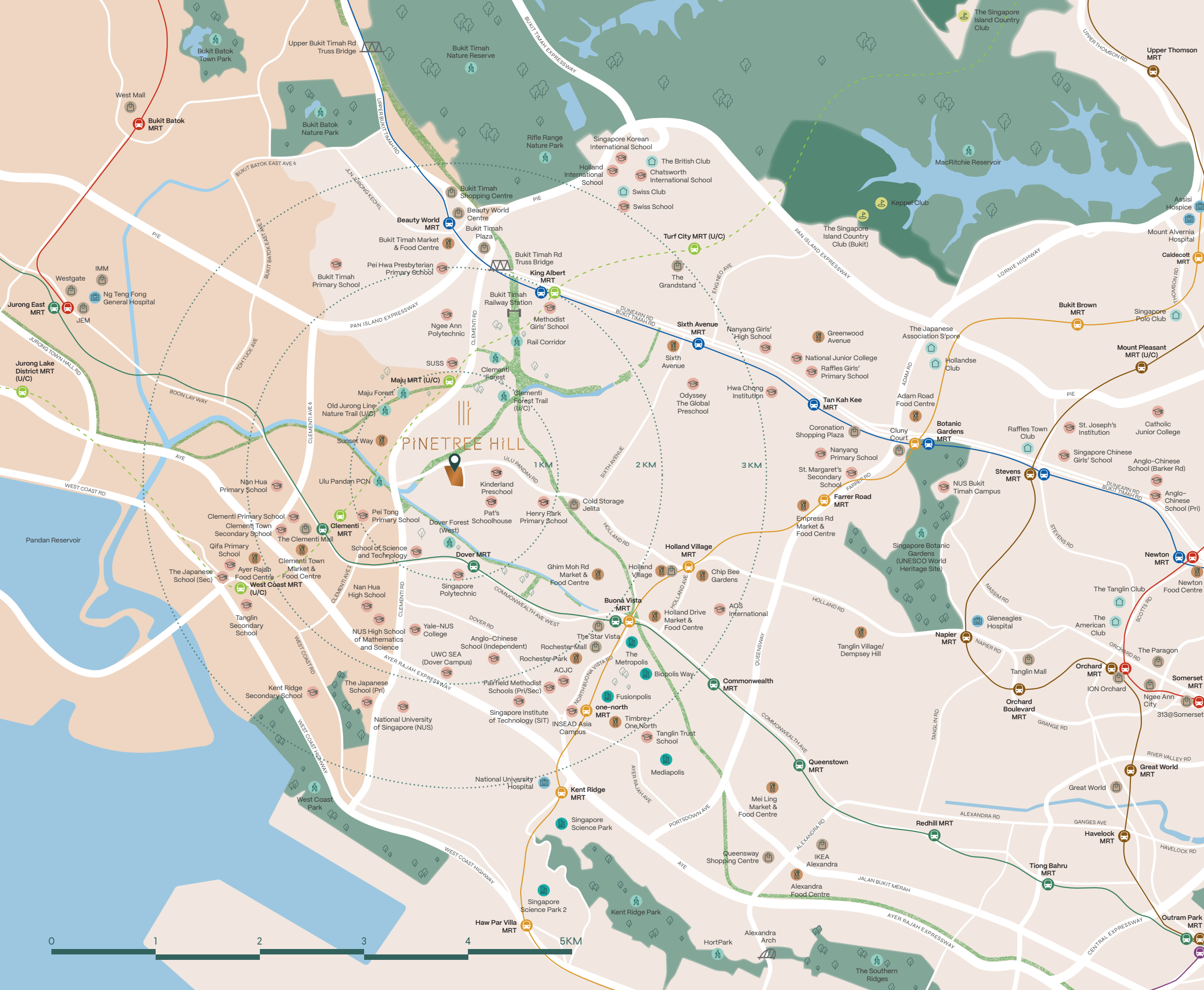




A DESIRED LOCALE.
ELEVATED BY NATURE.
HONED TO PERFECTION.

PINETREE HILL

ARTIST'S IMPRESSION



DOVER MRT



HENRY PARK PRIMARY SCHOOL



HOLLAND VILLAGE MARKET & FOOD CENTRE



BIOPOLIS, ONE-NORTH

- CONNECTIVITY
 - EDUCATION
 - NATURE/LEISURE
 - LIFESTYLE
 - FOOD & DINING
 - BUSINESS HUBS
 - HEALTHCARE
 - COUNTRY CLUBS
- EAST-WEST LINE
 - NORTH-SOUTH LINE
 - NORTH-EAST LINE
 - CIRCLE LINE
 - DOWNTOWN LINE
 - THOMSON-EAST COAST LINE
 - CROSS ISLAND LINE (U/C)
 - RAIL CORRIDOR/
NATURE TRAIL/
PARK CONNECTOR
- CENTRAL REGION
 - OUTSIDE CENTRAL REGION

EXPLORE NEW ADVENTURES
FOR ALL YOUR LIFESTYLE NEEDS.

Scan here to explore curated trails
that your new neighbourhood has to offer.



ULU PANDAN PARK CONNECTOR

CONNECT SEAMLESSLY TO WORK AND PLAY

Live in an exciting and energetic neighbourhood close to a prime education belt, with vibrant F&B scene in Holland Village and business opportunities in one-north.

| MRT | |
|--|---|
| Dover MRT | 15 mins* |
| Clementi MRT (Interchange) | 1 stop away (to future Cross Island Line) |
| Buona Vista MRT (Interchange) | 1 stop away (to Circle Line) |
| Holland Village MRT (via Buona Vista on Circle Line) | 2 stops away |
| one-north MRT (via Buona Vista on Circle Line) | 2 stops away |
| Raffles Place MRT (Interchange) | 8 stops away (to North South Line) |

| EXPRESSWAYS | |
|-----------------------------|--|
| Minutes drive away | |
| Pan Island Expressway (PIE) | |
| Ayer Rajah Expressway (AYE) | |

| RENOWNED PRIMARY SCHOOLS | |
|---------------------------|-------------------------------------|
| Within 1km radius | Within 2km radius |
| Henry Park Primary School | Pei Hwa Presbyterian Primary School |
| Pei Tong Primary School | Methodist Girls' School |

| NATURE TRAILS & ATTRACTIONS | |
|-----------------------------|----------|
| Clementi Forest | 3 mins* |
| Ulu Pandan Park Connector | 5 mins* |
| Rail Corridor | 15 mins* |
| Singapore Botanic Gardens | 10 mins* |

| LIFESTYLE & DINING | |
|------------------------|----------|
| Minutes drive away | |
| Jelita Shopping Centre | 5 mins* |
| The Clementi Mall | 5 mins* |
| Holland Village | 8 mins* |
| The Star Vista | 8 mins* |
| Dempsey Hill | 10 mins* |
| The Grandstand | 10 mins* |
| ION Orchard | 15 mins* |

| BUSINESS HUBS | |
|-------------------------------|----------|
| Minutes drive away | |
| one-north Business Park | 10 mins* |
| Singapore Science Park I & II | 15 mins* |

*Based on estimated travel time, subject to traffic and weather conditions.

ELEVATED BY NATURE.

Rejuvenate yourself in nature-inspired designs and amenities, providing a sanctuary from the outside world.

OASIS PAVILION
ARTIST'S IMPRESSION



50m LAP POOL
ARTIST'S IMPRESSION

Come home to a restorative oasis from the hustle and bustle outside.



FOREST PLAYGROUND
ARTIST'S IMPRESSION

Revitalise in spaces created in extension of the natural surroundings.



ARTIST'S IMPRESSION
FLOWER SWATHE
ARTIST'S IMPRESSION



Iconic pine-cone shaped pavilions offer breezy, sun-dappled relaxation coves overlooking lush greenery.

PINETREE NEST
ARTIST'S IMPRESSION



FLOATING PAVILION
ARTIST'S IMPRESSION

Retreat into curated intimate spaces.

SMART AND GREEN HOME FOR THE FUTURE



SMART HOME FEATURES



SMART HOME HUB

Your one-stop platform to access all your smart and eco-friendly home needs. Able to be controlled remotely via mobile phone, making life just that much simpler.



FACILITIES BOOKING

Book condominium facilities promptly via your mobile app or access card. On the day and time of usage, simply enter via your mobile app or access card.



VISITOR E-REGISTRATION

Having guests over is made seamless at Pinetree Hill. Simply pre-register them online and send them a QR code for entry upon arrival.



SMART IP INDOOR CAM

A portable camera for remote home security and surveillance. With two-way audio communication, motion detection, and video recording, peace of mind is guaranteed.



DIGITAL LOCKSET

With options of fingerprint, pin code, mobile app or card access, control your front door with utmost ease.



SMART INFRARED AIRCON CONTROL

Have your home cool and waiting for you with remote access of air-conditioners. While you're out and about, set the temperature and time schedule for the kids at home.



RENT-AND-RIDE A BIKE

Explore the nearby Ulu Pandan Park Connector and Rail Corridor anytime with the convenience of instant bicycle reservations. Enjoy the freedom and comfort of riding whenever you desire.

GREEN HOME FEATURES



EV CHARGING LOT

Trusty EV charging stations can be found in the car park, allowing EV and Plug-in Hybrid EV car owners true ease and reliability in the pursuit of sustainable living.



SOLAR PANEL

Solar panels offset energy consumption in common areas. All appliances provided have the highest rating in the class under The Energy Label by The National Environment Agency (NEA).

SAFE HOME FEATURE



UV CLEAN AIR

With an UV Clean Air system, circulated air in lifts are regularly sanitised and purified.

SITE PLAN

A tranquil enclave for you and your loved ones.
Step into serenity, where nature is amplified.
PineTree Hill is an oasis for you to relax and revitalise.

ARRIVAL (1ST STOREY)

- 1 Guardhouse
- 2 Side Gate
- 3 Arrival Plaza
- 4 Drop-off (Oasis Pavilion)
- 5 Pine Grove Pond
- 6 Waterwall (The Vertical Oasis)

BLOOMING SANCTUARIES (1ST STOREY)

- 7 Cyathea Garden
- 8 Maranta Garden
- 9 Heliconia Garden
- 10 Reflective Pond
- 11 Forest Pavilion (Pinetree Nest)
- 12 Flower Swathe

RELAXING RETREATS (1ST STOREY)

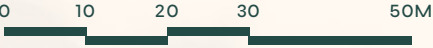
- 13 Outdoor Social Lounge
- 14 Gym and Social Space (The Commune)
- 15 Function Room 1 (The Royal)
- 16 Function Room 2 (The Tangerine)
- 17 Function Room 3 (The Orient)
- 18 Social Cove
- 19 Gourmet Pavilion
- 20 Japanese Gourmet Pavilion
- 21 Floating Pavilion
- 22 BBQ Pavilion
- 23 Karaoke Room (Basement)

REVITALISING ENCLAVES (1ST STOREY)

- 24 Half Basketball Court
- 25 Tennis Court
- 26 50m Lap Pool
- 27 Pool Deck
- 28 Pool Cabanas
- 29 Kid's Play Pool
- 30 Oasis Pool
- 31 Aquatherapy Pool
- 32 Forest Playground
- 33 Exploration Trail
- 34 Outdoor Gym

OTHER FACILITIES

- 35 Changing Rooms (1st storey)
- 36 Emergency Exit Side Gate (1st storey)
- 37 Bicycle Bays (Basement)
- 38 Genset (Basement)
- 39 Bin Centre (Basement)
- 40 Electrical Sub-Station (Basement)
- 41 Management Office (Basement)
- 42 Resident's Lobby (Basement)
- Outline of Water Tank at Roof
- VS Ventilation Shaft (1st storey)



BP NO.: A1287-00009-2022-BP01 DATED 08/05/2023
BP NO.: A1287-00009-2022-BP02 DATED 31/05/2023

ARTIST'S IMPRESSION

CHOICE UNITS

| 30 PINE GROVE, SINGAPORE 598441 | | | | | | | | |
|---------------------------------|---------|-------|-----|----------|---------|-------|---------|-------|
| UNIT/ FLOOR | 01 | 02 | 03 | 04 | 05 | 06 | 07 | 08 |
| 24 | 3B2(a) | 2BPS1 | 1BS | 3BPS1(a) | 4BP1(a) | 2B(a) | 2BP3(a) | 4B(a) |
| 23 | 3B2 | 2BPS1 | 1BS | 3BPS1 | 4BP1 | 2B | 2BP3 | 4B |
| 22 | 3B2 | 2BPS1 | 1BS | 3BPS1 | 4BP1 | 2B | 2BP3 | 4B |
| 21 | 3B2 | 2BPS1 | 1BS | 3BPS1 | 4BP1 | 2B | 2BP3 | 4B |
| 20 | 3B2 | 2BPS1 | 1BS | 3BPS1 | 4BP1 | 2B | 2BP3 | 4B |
| 19 | 3B2 | 2BPS1 | 1BS | 3BPS1 | 4BP1 | 2B | 2BP3 | 4B |
| 18 | 3B2 | 2BPS1 | 1BS | 3BPS1 | 4BP1 | 2B | 2BP3 | 4B |
| 17 | 3B2 | 2BPS1 | 1BS | 3BPS1 | 4BP1 | 2B | 2BP3 | 4B |
| 16 | 3B2 | 2BPS1 | 1BS | 3BPS1 | 4BP1 | 2B | 2BP3 | 4B |
| 15 | 3B2 | 2BPS1 | 1BS | 3BPS1 | 4BP1 | 2B | 2BP3 | 4B |
| 14 | 3B2 | 2BPS1 | 1BS | 3BPS1 | 4BP1 | 2B | 2BP3 | 4B |
| 13 | 3B2 | 2BPS1 | 1BS | 3BPS1 | 4BP1 | 2B | 2BP3 | 4B |
| 12 | 3B2 | 2BPS1 | 1BS | 3BPS1 | 4BP1 | 2B | 2BP3 | 4B |
| 11 | 3B2 | 2BPS1 | 1BS | 3BPS1 | 4BP1 | 2B | 2BP3 | 4B |
| 10 | 3B2 | 2BPS1 | 1BS | 3BPS1 | 4BP1 | 2B | 2BP3 | 4B |
| 09 | 3B2 | 2BPS1 | 1BS | 3BPS1 | 4BP1 | 2B | 2BP3 | 4B |
| 08 | 3B2 | 2BPS1 | 1BS | 3BPS1 | 4BP1 | 2B | 2BP3 | 4B |
| 07 | 3B2 | 2BPS1 | 1BS | 3BPS1 | 4BP1 | 2B | 2BP3 | 4B |
| 06 | 3B2 | 2BPS1 | 1BS | 3BPS1 | 4BP1 | 2B | 2BP3 | 4B |
| 05 | 3B2 | 2BPS1 | 1BS | 3BPS1 | 4BP1 | 2B | 2BP3 | 4B |
| 04 | 3B2 | 2BPS1 | 1BS | 3BPS1 | 4BP1 | 2B | 2BP3 | 4B |
| 03 | 3B2 | 2BPS1 | 1BS | 3BPS1 | 4BP1 | 2B | 2BP3 | 4B |
| 02 | | | | | | | | |
| 01 | GARDEN | | | | | | | |
| B | CARPARK | | | | | | | |

| | BEDROOM | TYPE | AREA | |
|--|---------------------------------------|--------------------|--------|-----------|
| | 1-Bedroom + Study | 1BS | 50sqm | 538sqft |
| | 2-Bedroom | 2B | 65sqm | 700sqft |
| | | 2B(a) | 79sqm | 850sqft |
| | 2-Bedroom Premium | 2BP1, 2BP2, 2BP3 | 71sqm | 764sqft |
| | | 2BP4 | 72sqm | 775sqft |
| | | 2BP2(a), 2BP3(a) | 85sqm | 915sqft |
| | 2-Bedroom Premium + Study | 2BPS1, 2BPS2 | 74sqm | 797sqft |
| | 3-Bedroom | 3B1, 3B2 | 90sqm | 969sqft |
| | | 3B1(a) | 108sqm | 1,163sqft |
| | | 3B2(a) | 109sqm | 1,173sqft |
| | 3-Bedroom Premium + Study | 3BPS1, 3BPS2 | 113sqm | 1,216sqft |
| | | 3BPS1(a), 3BPS2(a) | 132sqm | 1,421sqft |
| | 4-Bedroom Deluxe (with Private Lift) | 4B | 120sqm | 1,292sqft |
| | | 4B(a) | 138sqm | 1,485sqft |
| | 4-Bedroom Premium (with Private Lift) | 4BP1, 4BP2 | 136sqm | 1,464sqft |
| | | 4BP1(a), 4BP2(a) | 155sqm | 1,668sqft |
| | 5-Bedroom Premium (with Private Lift) | 5BP | 161sqm | 1,733sqft |
| | Penthouse | PH | 267sqm | 2,874sqft |

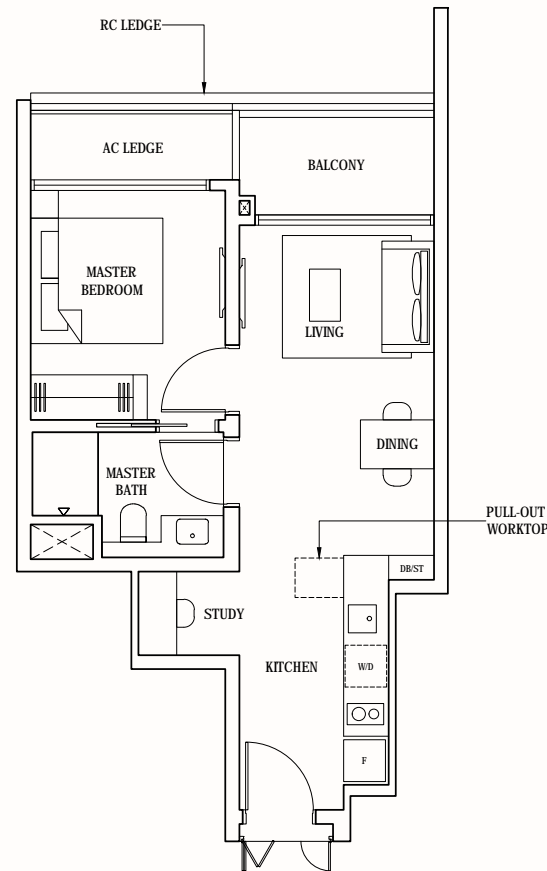
[illegible]

| UNIT/ FLOOR | 17 | 18 | 19 | 20 | 21 | 22 | 23 |
|----------------|---------|-------|------|--------|-----|------|----------|
| 24 | 4BP2(a) | 2BPS2 | 2BP1 | 3B1(a) | PH | | 3BPS1(a) |
| 23 | 4BP2 | 2BPS2 | 2BP1 | 3B1 | 5BP | 2BP4 | 3BPS1 |
| 22 | 4BP2 | 2BPS2 | 2BP1 | 3B1 | 5BP | 2BP4 | 3BPS1 |
| 21 | 4BP2 | 2BPS2 | 2BP1 | 3B1 | 5BP | 2BP4 | 3BPS1 |
| 20 | 4BP2 | 2BPS2 | 2BP1 | 3B1 | 5BP | 2BP4 | 3BPS1 |
| 19 | 4BP2 | 2BPS2 | 2BP1 | 3B1 | 5BP | 2BP4 | 3BPS1 |
| 18 | 4BP2 | 2BPS2 | 2BP1 | 3B1 | 5BP | 2BP4 | 3BPS1 |
| 17 | 4BP2 | 2BPS2 | 2BP1 | 3B1 | 5BP | 2BP4 | 3BPS1 |
| 16 | 4BP2 | 2BPS2 | 2BP1 | 3B1 | 5BP | 2BP4 | 3BPS1 |
| 15 | 4BP2 | 2BPS2 | 2BP1 | 3B1 | 5BP | 2BP4 | 3BPS1 |
| 14 | 4BP2 | 2BPS2 | 2BP1 | 3B1 | 5BP | 2BP4 | 3BPS1 |
| 13 | 4BP2 | 2BPS2 | 2BP1 | 3B1 | 5BP | 2BP4 | 3BPS1 |
| 12 | 4BP2 | 2BPS2 | 2BP1 | 3B1 | 5BP | 2BP4 | 3BPS1 |
| 11 | 4BP2 | 2BPS2 | 2BP1 | 3B1 | 5BP | 2BP4 | 3BPS1 |
| 10 | 4BP2 | 2BPS2 | 2BP1 | 3B1 | 5BP | 2BP4 | 3BPS1 |
| 09 | 4BP2 | 2BPS2 | 2BP1 | 3B1 | 5BP | 2BP4 | 3BPS1 |
| 08 | 4BP2 | 2BPS2 | 2BP1 | 3B1 | 5BP | 2BP4 | 3BPS1 |
| 07 | 4BP2 | 2BPS2 | 2BP1 | 3B1 | 5BP | 2BP4 | 3BPS1 |
| 06 | 4BP2 | 2BPS2 | 2BP1 | 3B1 | 5BP | 2BP4 | 3BPS1 |
| 05 | 4BP2 | 2BPS2 | 2BP1 | 3B1 | 5BP | 2BP4 | 3BPS1 |
| 04 | 4BP2 | 2BPS2 | 2BP1 | 3B1 | 5BP | 2BP4 | 3BPS1 |
| 03 | 4BP2 | 2BPS2 | 2BP1 | 3B1 | 5BP | 2BP4 | 3BPS1 |
| 02 | 4BP2 | 2BPS2 | 2BP1 | 3B1 | 5BP | 2BP4 | 3BPS1 |
| 01 | GARDEN | | | | | | |
| B | CARPARK | | | | | | |

1-BEDROOM + STUDY

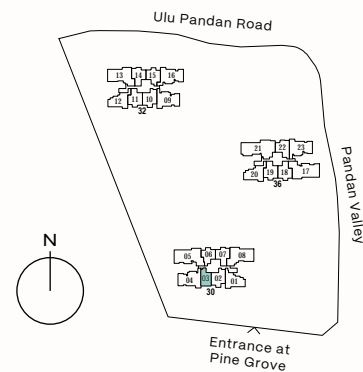
TYPE 1BS

50 sqm (538 sqft)
#03-03 to #24-03



0 1 2 3 4 5M

Areas include AC ledge and balcony, where applicable. All RC ledges are excluded from strata area and non-load bearing. The plans are subjected to change as may be required by relevant authorities. All areas and measurements stated herein as approximate and subject to final survey.



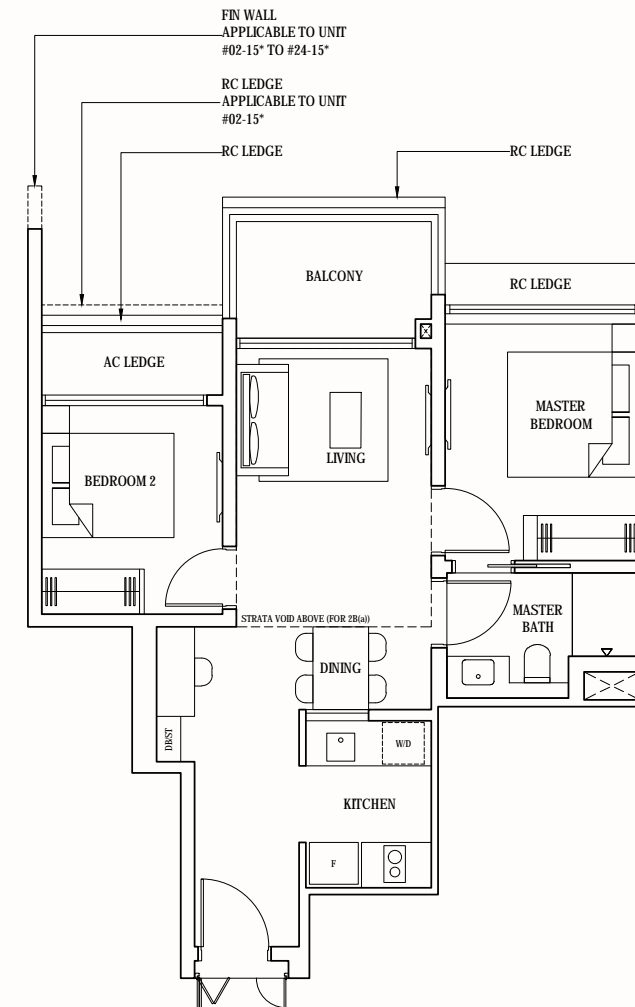
2-BEDROOM

TYPE 2B & 2B(a)

TYPE 2B
65 sqm (700 sqft)
#03-06 to #23-06
#02-15* to #23-15*

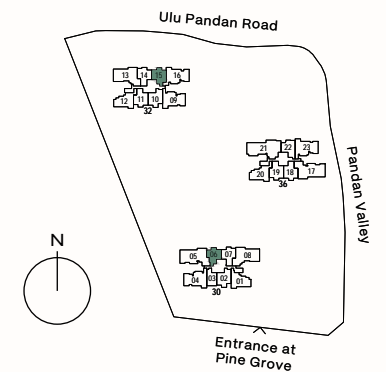
TYPE 2B(a)
79 sqm (850 sqft)
Inclusive of strata void of
14 sqm (151 sqft) above
living and dining

#24-06
#24-15*
*Mirrored unit



0 1 2 3 4 5M

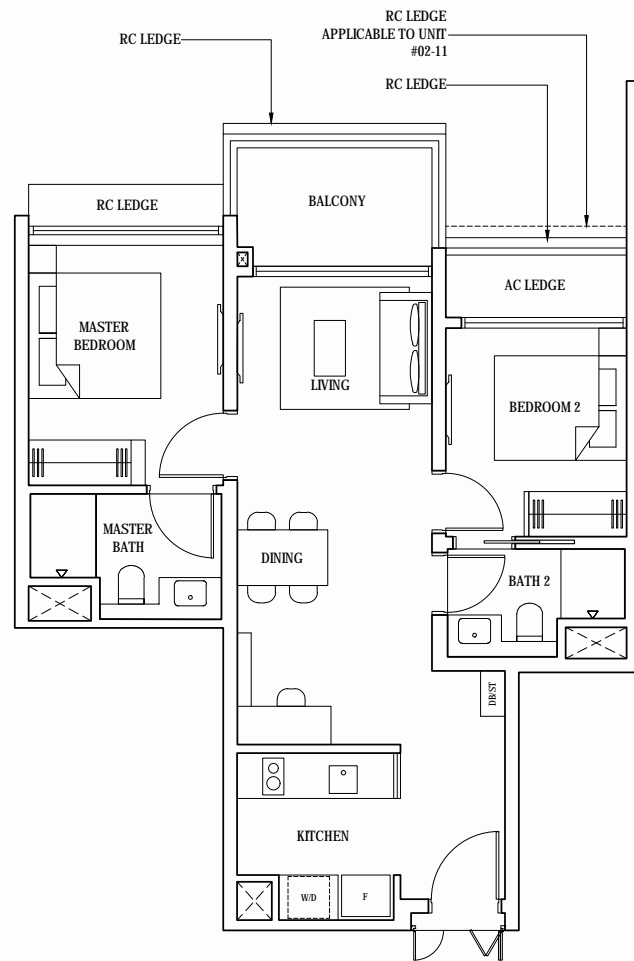
Areas include AC ledge and balcony, where applicable. All RC ledges are excluded from strata area and non-load bearing. The plans are subjected to change as may be required by relevant authorities. All areas and measurements stated herein as approximate and subject to final survey.



2-BEDROOM PREMIUM

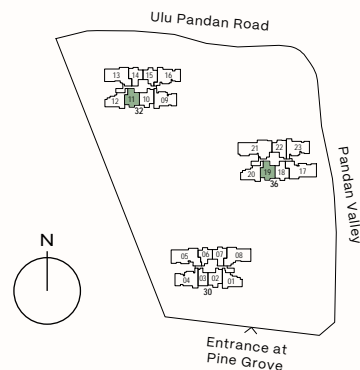
TYPE 2BP1

71 sqm (764 sqft)
 #02-11 to #24-11
 #02-19 to #24-19



0 1 2 3 4 5M

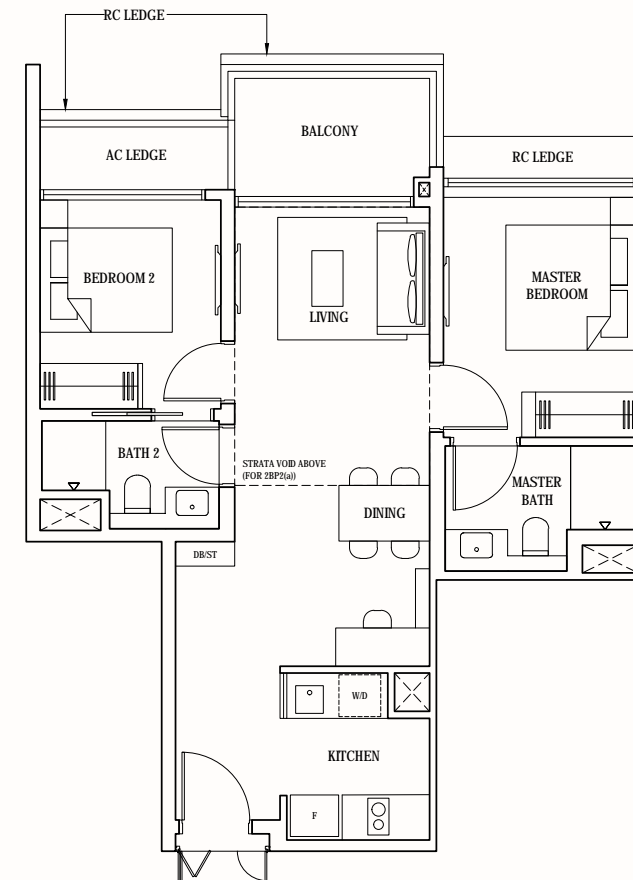
Areas include AC ledge and balcony, where applicable. All RC ledges are excluded from strata area and non-load bearing. The plans are subjected to change as may be required by relevant authorities. All areas and measurements stated herein as approximate and subject to final survey.



2-BEDROOM PREMIUM

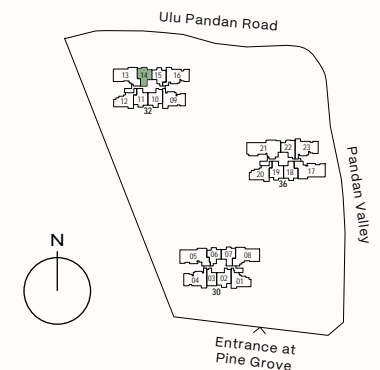
TYPE 2BP2 & 2BP2(a)

TYPE 2BP2
 71 sqm (764 sqft)
 #02-14 to #23-14
 TYPE 2BP2(a)
 85 sqm (915 sqft)
 Inclusive of strata void of
 14 sqm (151 sqft) above
 living and dining
 #24-14



0 1 2 3 4 5M

Areas include AC ledge and balcony, where applicable. All RC ledges are excluded from strata area and non-load bearing. The plans are subjected to change as may be required by relevant authorities. All areas and measurements stated herein as approximate and subject to final survey.



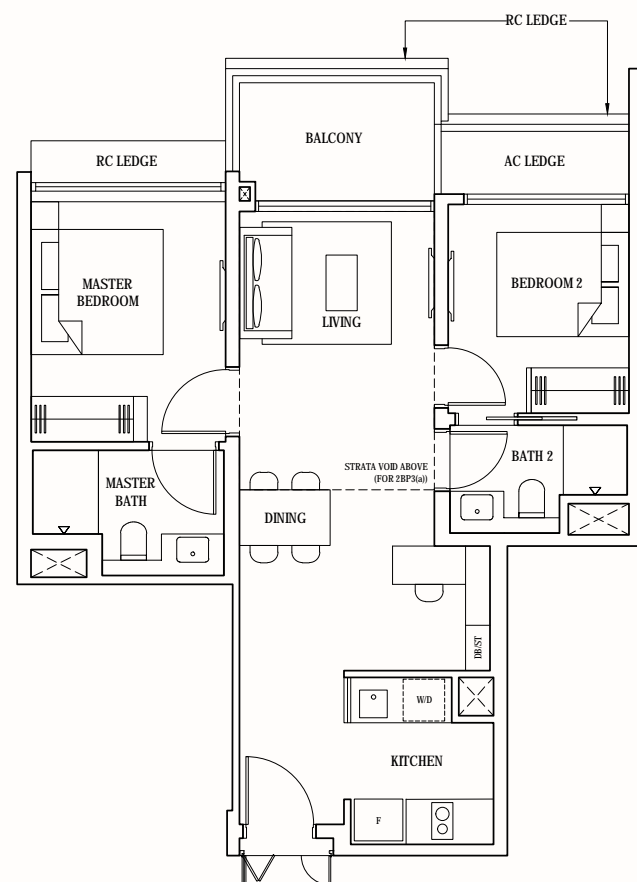
2-BEDROOM PREMIUM

TYPE 2BP3 & 2BP3(a)

TYPE 2BP3
71 sqm (764 sqft)
#03-07 to #23-07

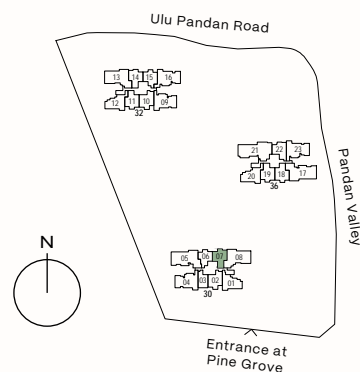
TYPE 2BP3(a)
85 sqm (915 sqft)
Inclusive of strata void of
14 sqm (151 sqft) above
living and dining

#24-07



0 1 2 3 4 5M

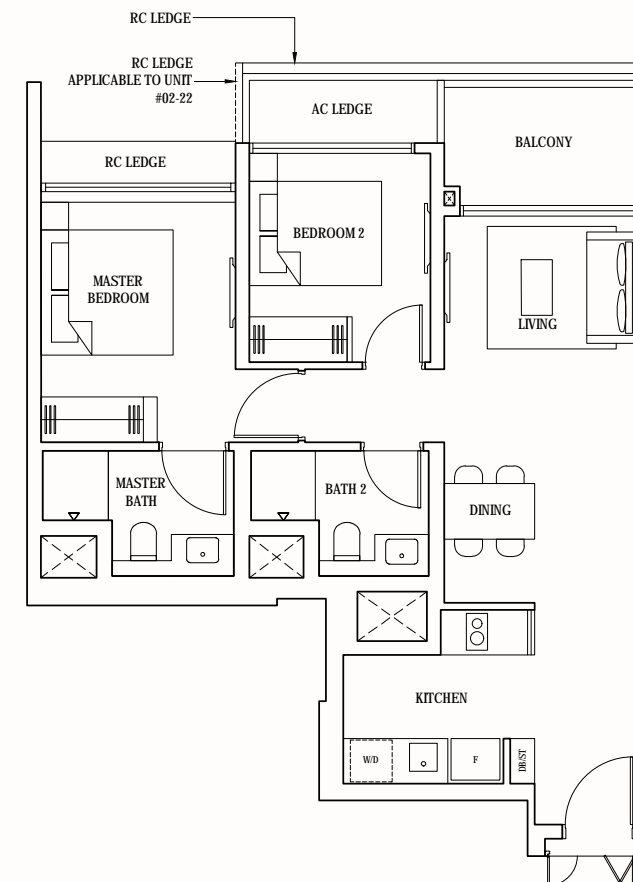
Areas include AC ledge and balcony, where applicable. All RC ledges are excluded from strata area and non-load bearing. The plans are subjected to change as may be required by relevant authorities. All areas and measurements stated herein as approximate and subject to final survey.



2-BEDROOM PREMIUM

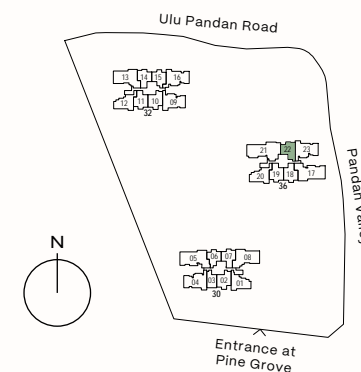
TYPE 2BP4

72 sqm (775 sqft)
#02-22 to #23-22



0 1 2 3 4 5M

Areas include AC ledge and balcony, where applicable. All RC ledges are excluded from strata area and non-load bearing. The plans are subjected to change as may be required by relevant authorities. All areas and measurements stated herein as approximate and subject to final survey.



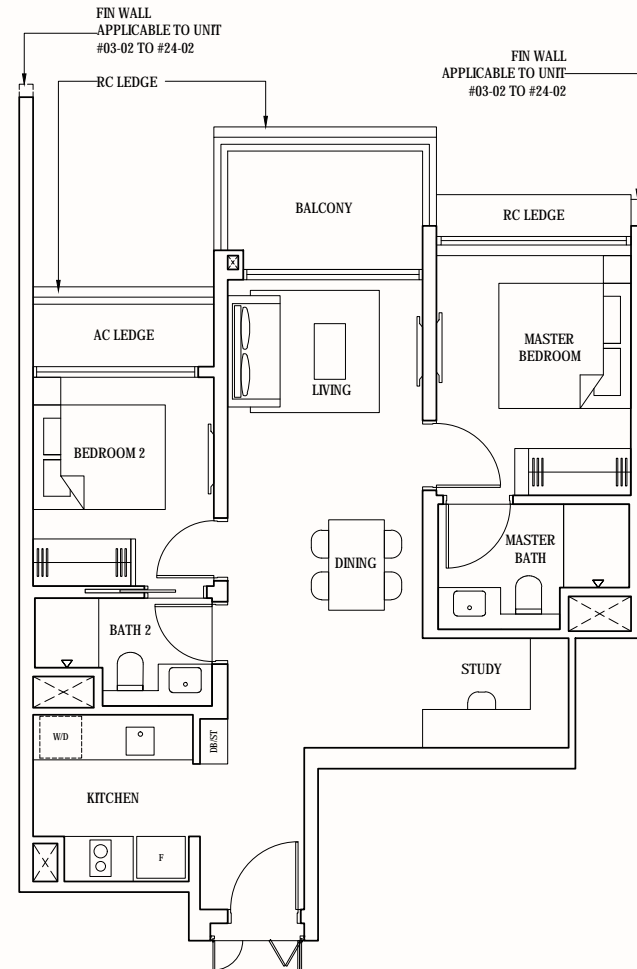


2-BEDROOM PREMIUM + STUDY

TYPE 2BPS1

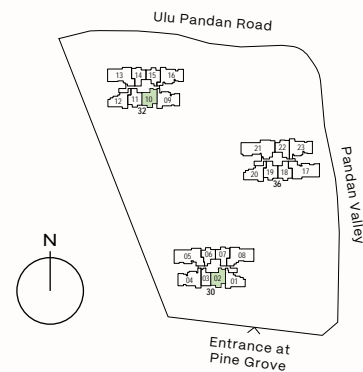
74 sqm (797 sqft)

#03-02 to #24-02
#02-10 to #24-10



0 1 2 3 4 5M

Areas include AC ledge and balcony, where applicable. All RC ledges are excluded from strata area and non-load bearing. The plans are subjected to change as may be required by relevant authorities. All areas and measurements stated herein as approximate and subject to final survey.

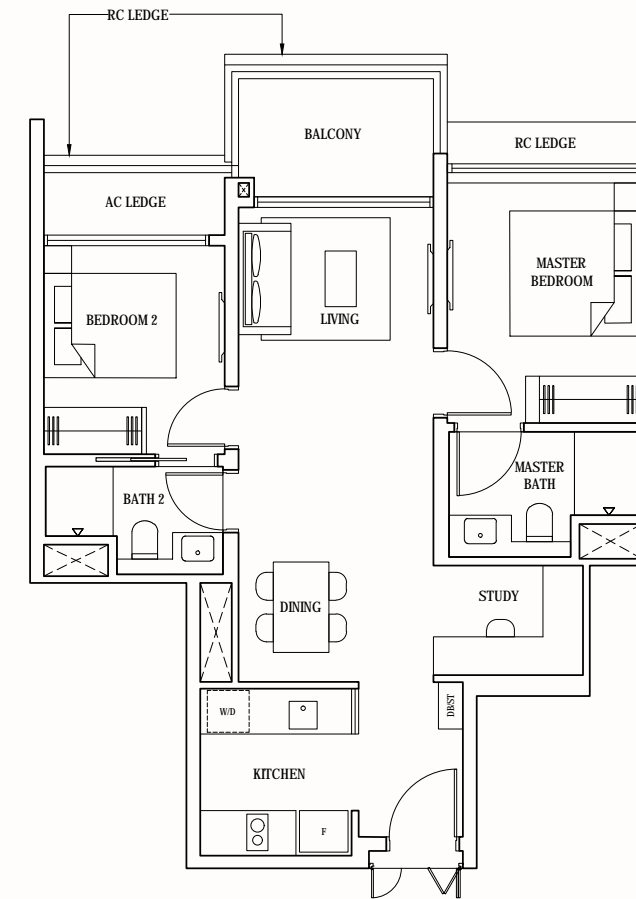


2-BEDROOM PREMIUM + STUDY

TYPE 2BPS2

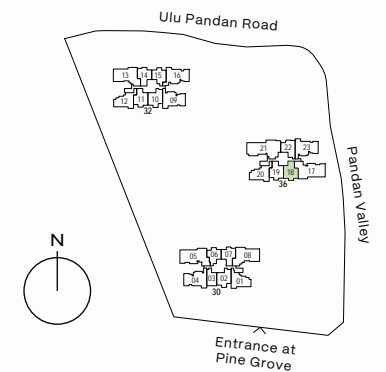
74 sqm (797 sqft)

#02-18 to #24-18



0 1 2 3 4 5M

Areas include AC ledge and balcony, where applicable. All RC ledges are excluded from strata area and non-load bearing. The plans are subjected to change as may be required by relevant authorities. All areas and measurements stated herein as approximate and subject to final survey.



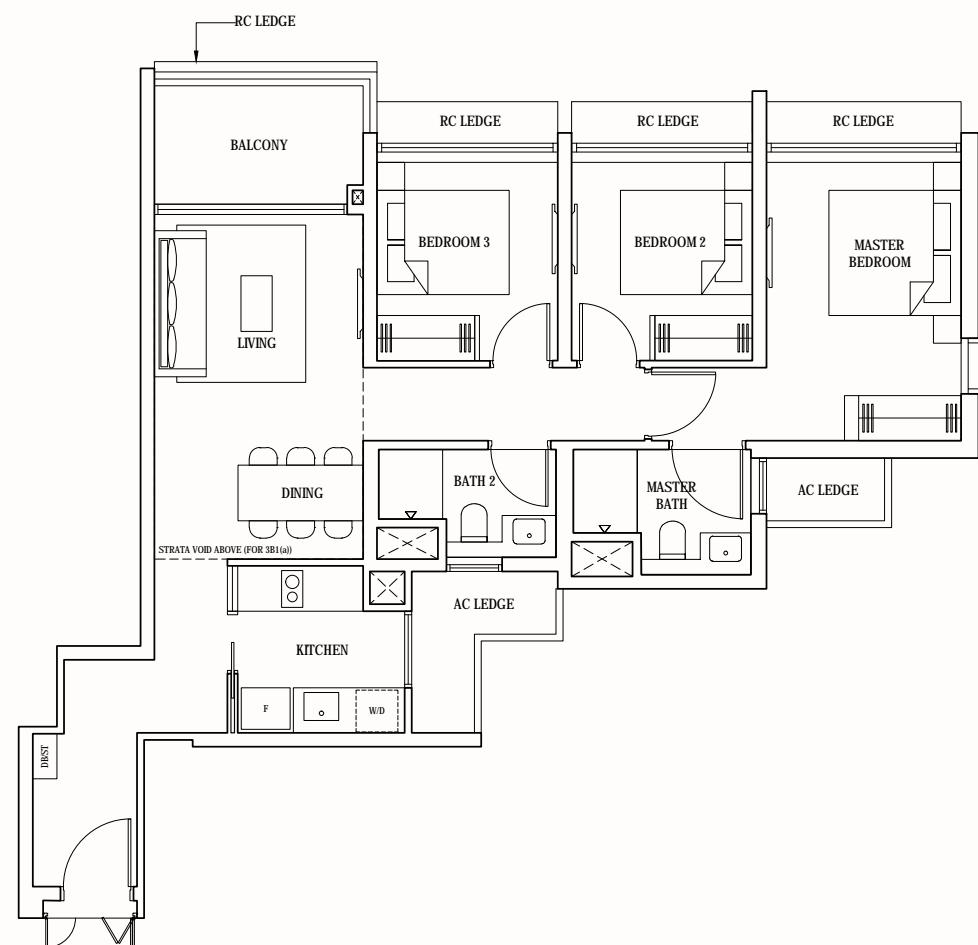
3-BEDROOM

TYPE 3B1 & 3B1(a)

TYPE 3B1
90 sqm (969 sqft)
#02-12 to #23-12
#02-20 to #23-20

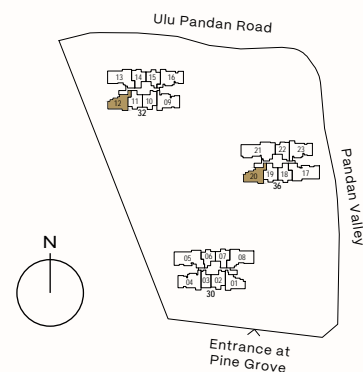
TYPE 3B1(a)
108 sqm (1163 sqft)
Inclusive of strata void of
18 sqm (194 sqft) above
living and dining

#24-12
#24-20



0 1 2 3 4 5M

Areas include AC ledge and balcony, where applicable. All RC ledges are excluded from strata area and non-load bearing. The plans are subjected to change as may be required by relevant authorities. All areas and measurements stated herein as approximate and subject to final survey.



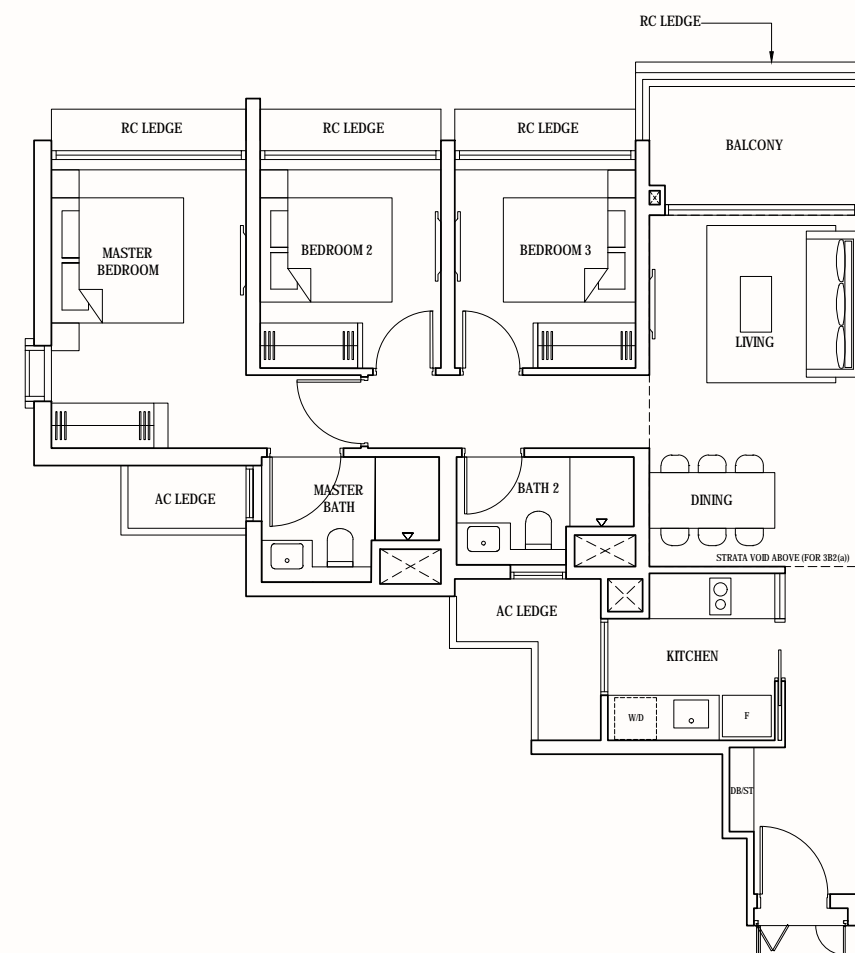
3-BEDROOM

TYPE 3B2 & 3B2(a)

TYPE 3B2
90 sqm (969 sqft)
#03-01 to #23-01

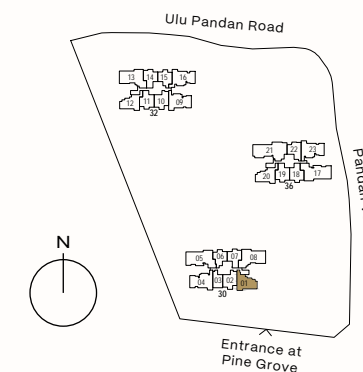
TYPE 3B2(a)
109 sqm (1173 sqft)
Inclusive of strata void of
19 sqm (205 sqft) above
living and dining

#24-01



0 1 2 3 4 5M

Areas include AC ledge and balcony, where applicable. All RC ledges are excluded from strata area and non-load bearing. The plans are subjected to change as may be required by relevant authorities. All areas and measurements stated herein as approximate and subject to final survey.



3-BEDROOM PREMIUM + STUDY

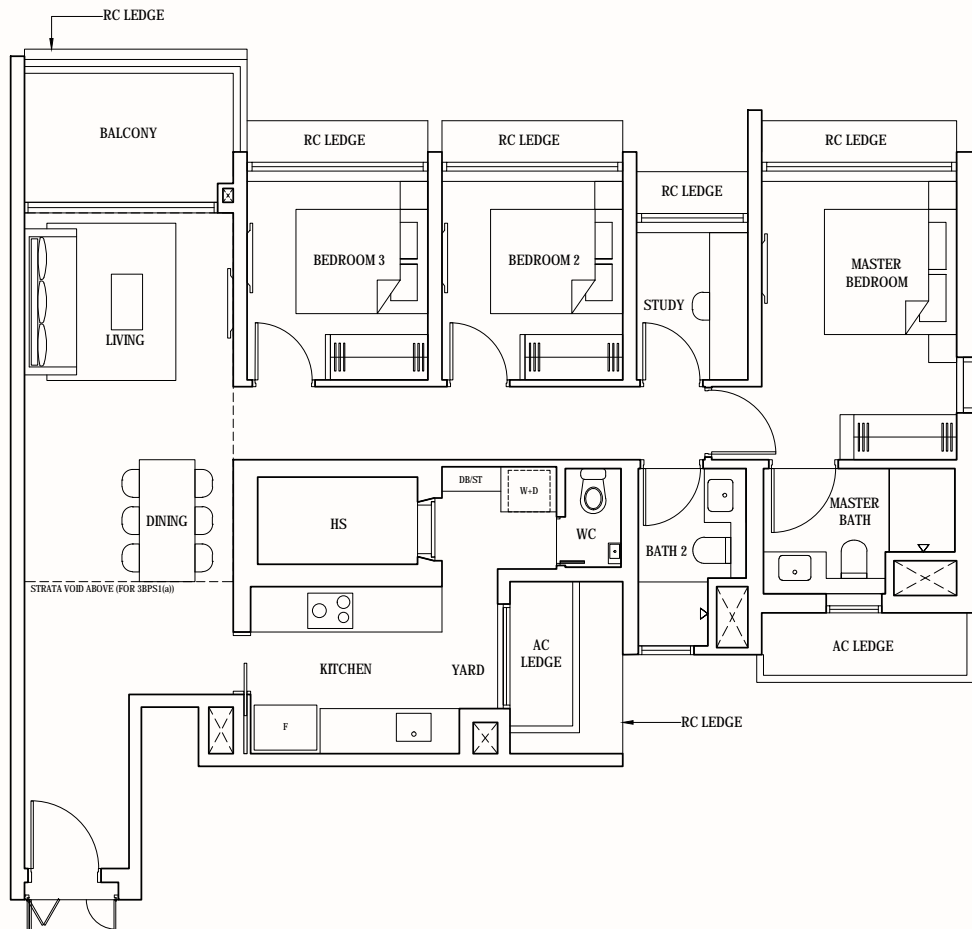
TYPE 3BPS1 & 3BPS1(a)

TYPE 3BPS1
113 sqm (1216 sqft)

#03-04 to #23-04
#02-09* to #23-09*
#02-23 to #23-23

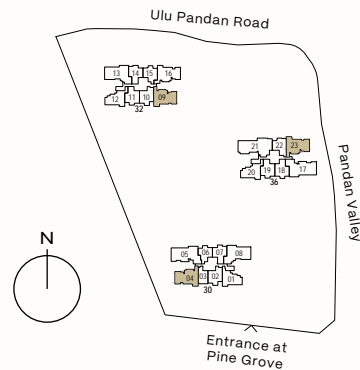
TYPE 3BPS1(a)
132 sqm (1421 sqft)
Inclusive of strata void of
19 sqm (205 sqft) above
living and dining

#24-04
#24-09*
#24-23
*Mirrored unit



0 1 2 3 4 5M

Areas include AC ledge and balcony, where applicable. All RC ledges are excluded from strata area and non-load bearing. The plans are subjected to change as may be required by relevant authorities. All areas and measurements stated herein as approximate and subject to final survey.



3-BEDROOM PREMIUM + STUDY

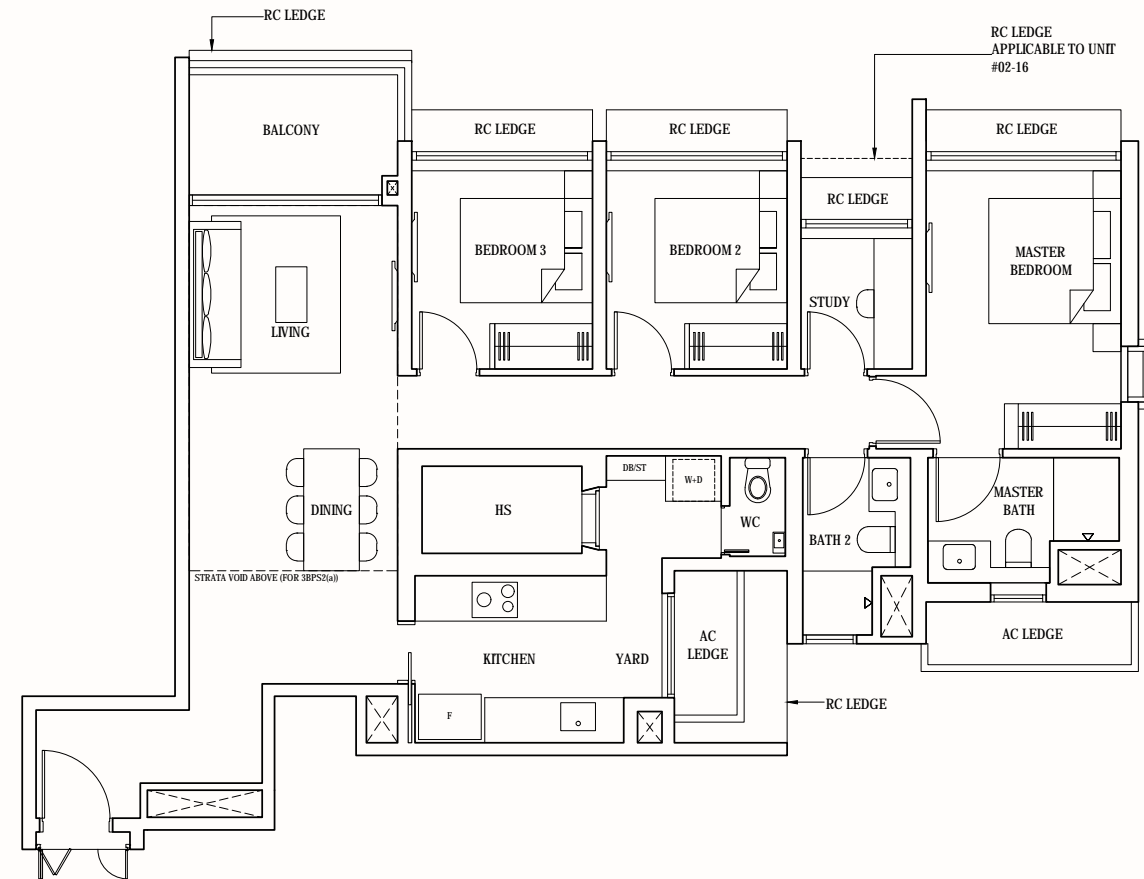
TYPE 3BPS2 & 3BPS2(a)

TYPE 3BPS2
113 sqm (1216 sqft)

#02-16 to #23-16

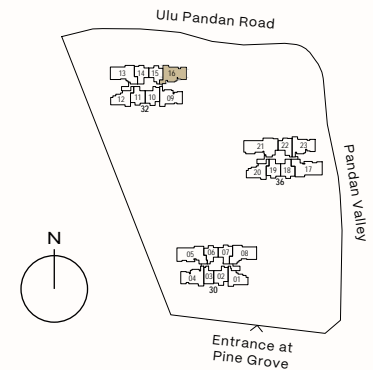
TYPE 3BPS2(a)
132 sqm (1421 sqft)
Inclusive of strata void of
19 sqm (205 sqft) above
living and dining

#24-16



0 1 2 3 4 5M

Areas include AC ledge and balcony, where applicable. All RC ledges are excluded from strata area and non-load bearing. The plans are subjected to change as may be required by relevant authorities. All areas and measurements stated herein as approximate and subject to final survey.





4-BEDROOM DELUXE (WITH PRIVATE LIFT)

TYPE 4B & 4B(a)

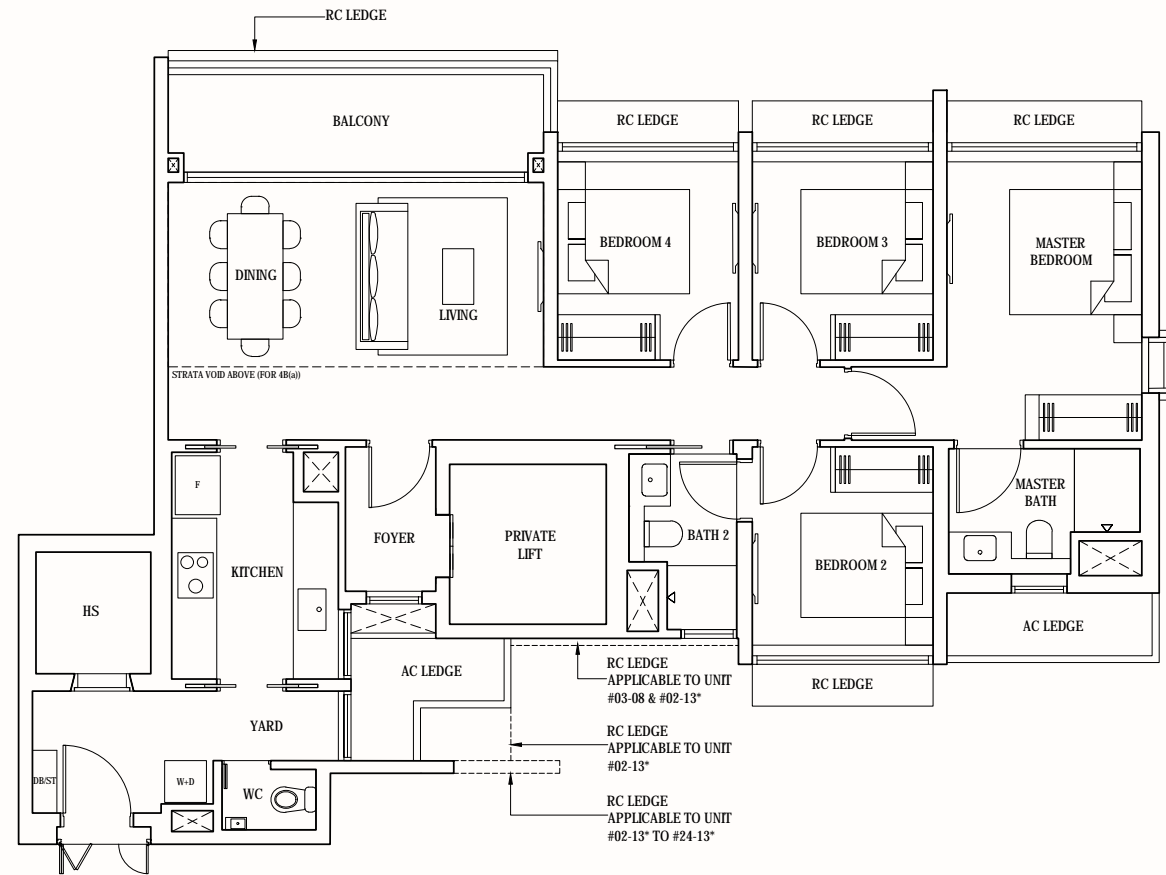
TYPE 4B
120 sqm (1292 sqft)

#03-08 to #23-08
#02-13* to #23-13*

TYPE 4B(a)
138 sqm (1485 sqft)
Inclusive of strata void of
18 sqm (194 sqft) above
living and dining

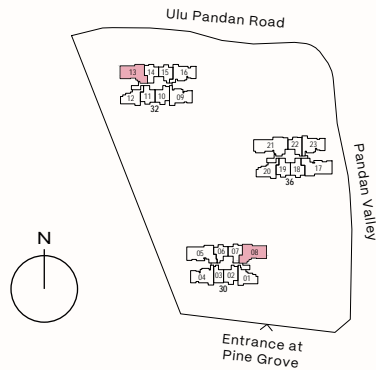
#24-08
#24-13*

*Mirrored unit



0 1 2 3 4 5M

Areas include AC ledge and balcony, where applicable. All RC ledges are excluded from strata area and non-load bearing. The plans are subjected to change as may be required by relevant authorities. All areas and measurements stated herein as approximate and subject to final survey.



4-BEDROOM PREMIUM (WITH PRIVATE LIFT)

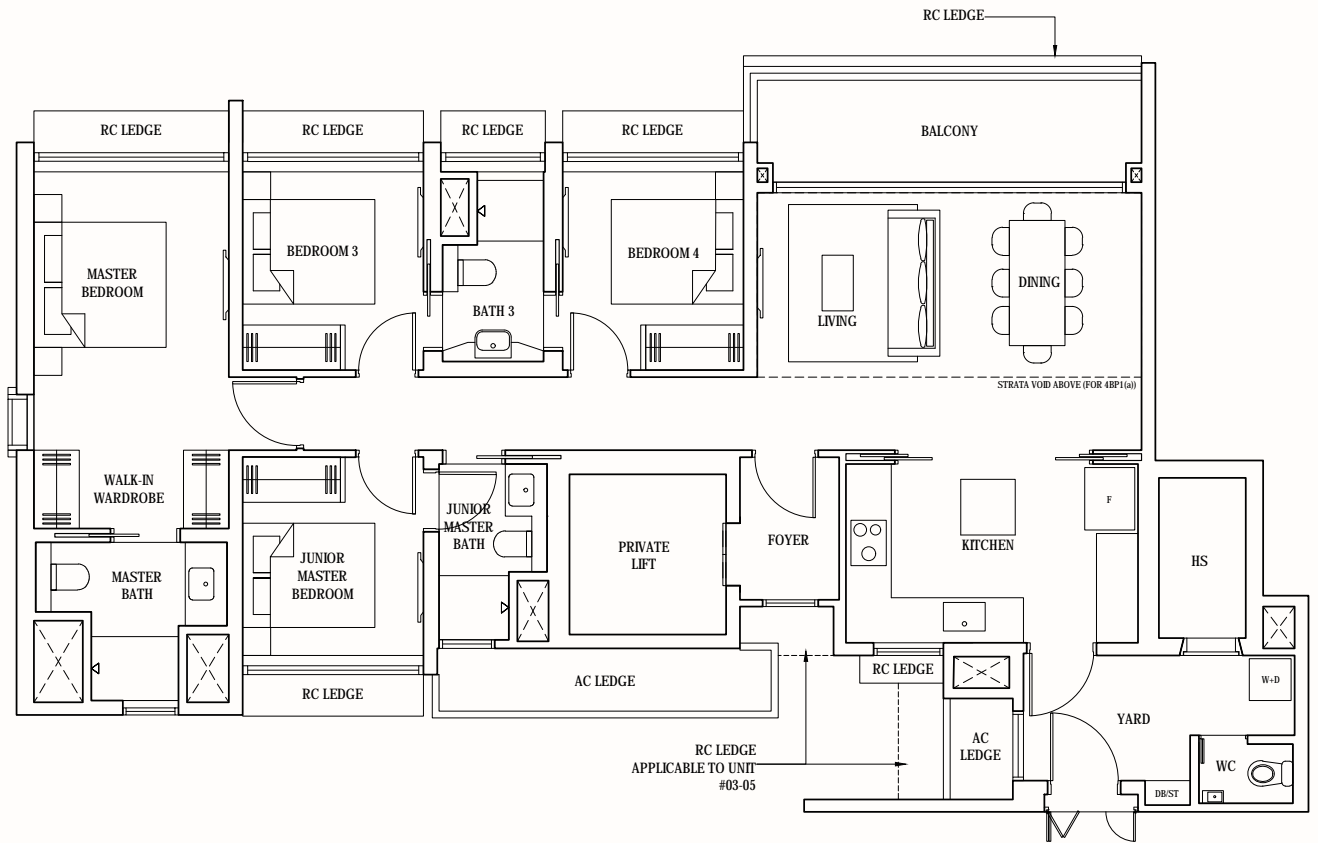
TYPE 4BP1 & 4BP1(a)

TYPE 4BP1
136 sqm (1464 sqft)

#03-05 to #23-05

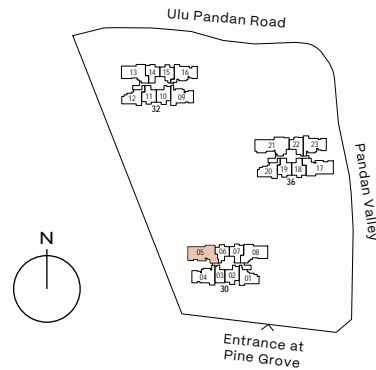
TYPE 4BP1(a)
155 sqm (1668 sqft)
Inclusive of strata void of
19 sqm (205 sqft) above
living and dining

#24-05



0 1 2 3 4 5M

Areas include AC ledge and balcony, where applicable. All RC ledges are excluded from strata area and non-load bearing. The plans are subjected to change as may be required by relevant authorities. All areas and measurements stated herein as approximate and subject to final survey.





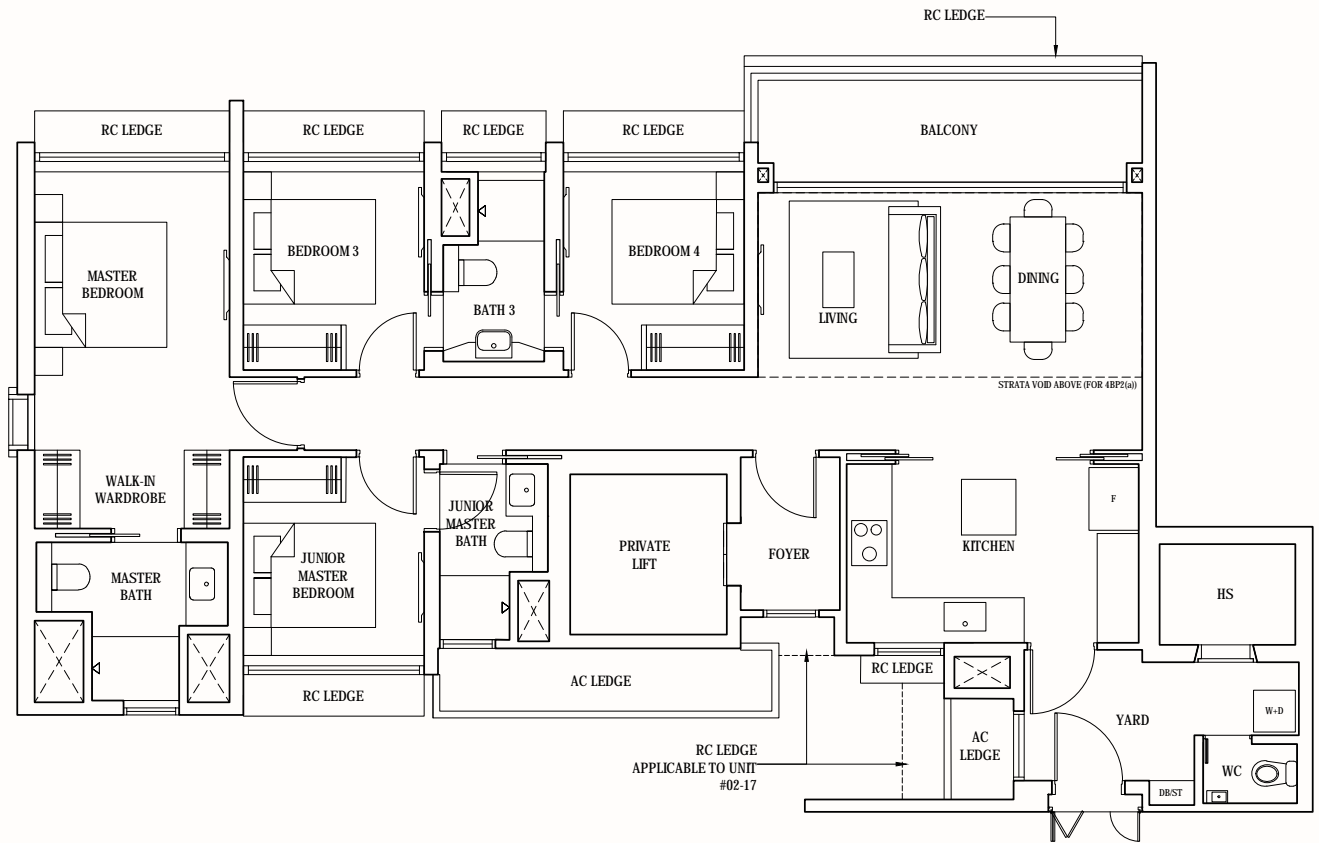
4-BEDROOM PREMIUM (WITH PRIVATE LIFT)

TYPE 4BP2 & 4BP2(a)

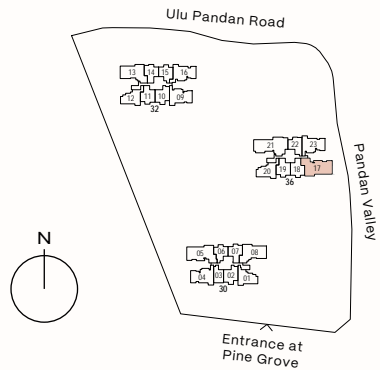
TYPE 4BP2
136 sqm (1464 sqft)
#02-17 to #23-17

TYPE 4BP2(a)
155 sqm (1668 sqft)
Inclusive of strata void of
19 sqm (205 sqft) above
living and dining

#24-17



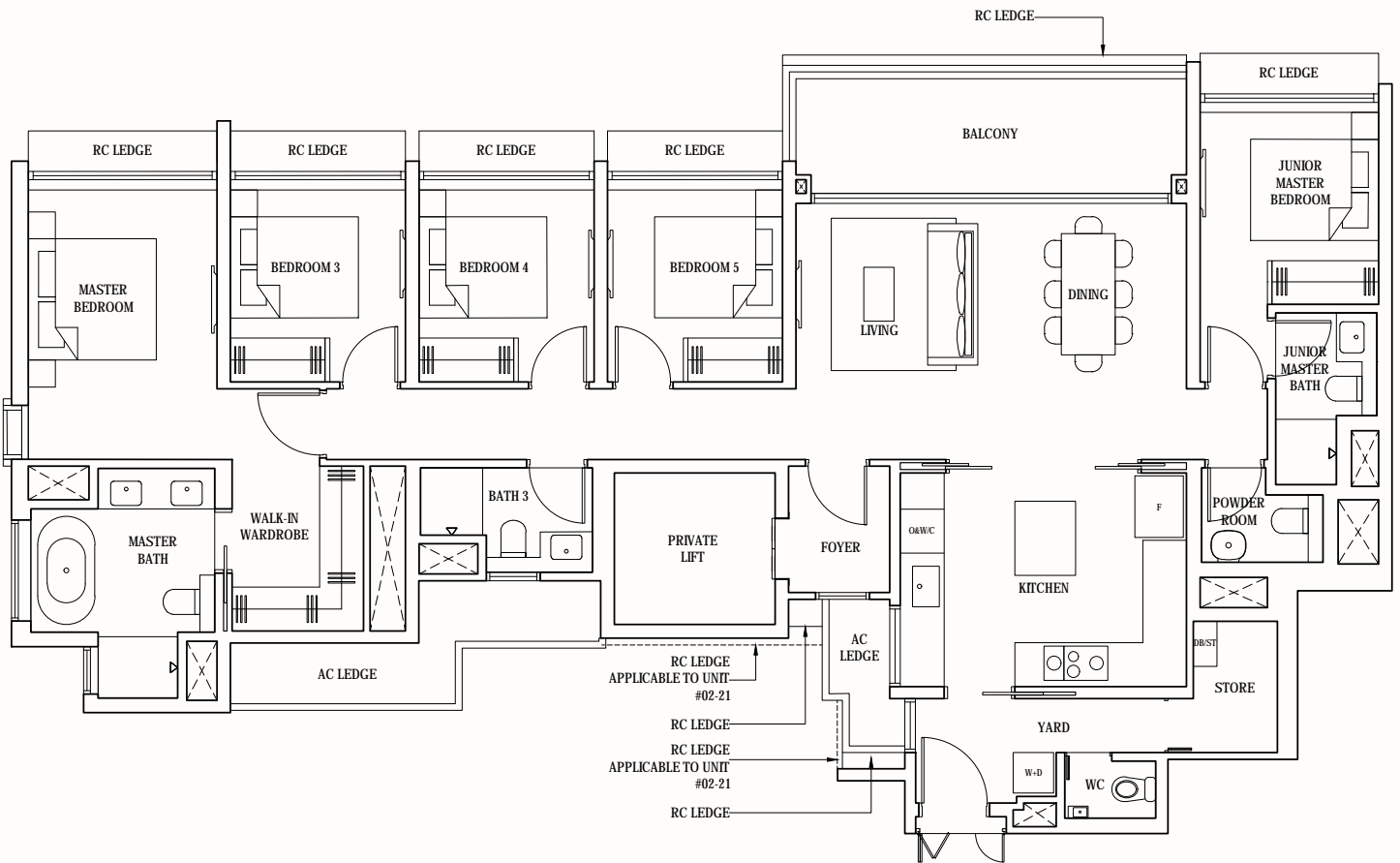
Areas include AC ledge and balcony, where applicable. All RC ledges are excluded from strata area and non-load bearing. The plans are subjected to change as may be required by relevant authorities. All areas and measurements stated herein as approximate and subject to final survey.



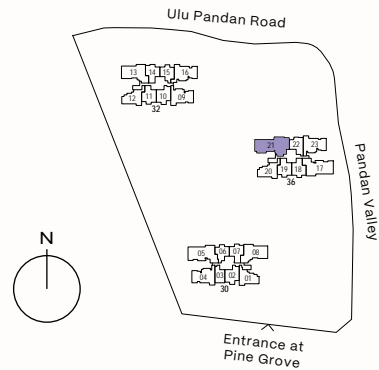
5-BEDROOM PREMIUM (WITH PRIVATE LIFT)

TYPE 5BP

161 sqm (1733 sqft)
#02-21 to #23-21



Areas include AC ledge and balcony, where applicable. All RC ledges are excluded from strata area and non-load bearing. The plans are subjected to change as may be required by relevant authorities. All areas and measurements stated herein as approximate and subject to final survey.



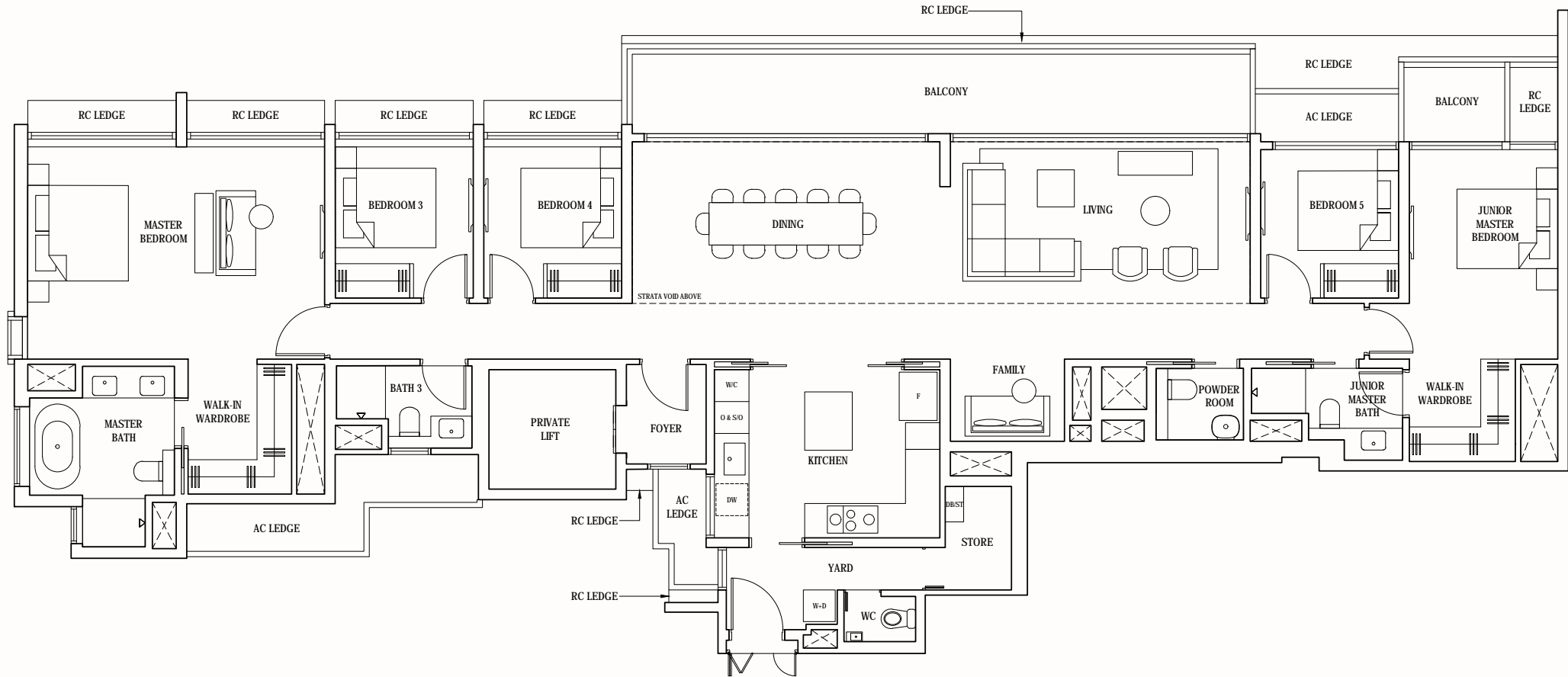
PENTHOUSE

TYPE PH

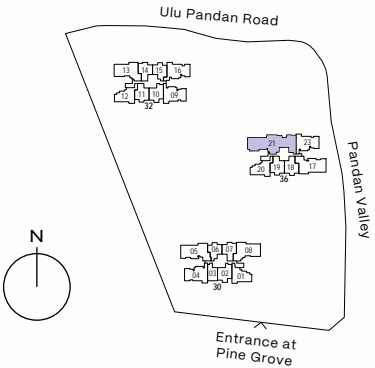
267 sqm (2874 sqft)

Inclusive of strata void of
43 sqm (463sqft) above
living and dining

#24-21



Areas include AC ledge and balcony, where applicable. All RC ledges are excluded from strata area and non-load bearing. The plans are subjected to change as may be required by relevant authorities. All areas and measurements stated herein as approximate and subject to final survey.



AN ELEVATED SANCTUARY
WITH MAGNIFICENT VIEWS

ABOUND WITH OPTIONS
FOR WORK AND PLAY





PINETREE HILL

Developer

United Venture Development (No. 5) Pte. Ltd.

Company Registration Number

202217866G

Developer's License Number

C1449

Tenure of Land

99 Years commencing from 12 September 2022

Encumbrances

Caveats and Mortgage-in-escrow in favour of
Oversea-Chinese Banking Corporation Limited

Expected Date Of Notice Of Vacant Possession

30 September 2027

Expected Date Of Legal Completion

30 September 2030

Lot & Mukim Number

MK04 LOT 07402W at Pine Grove